


Cyborg

Description: This tutorial shows you how to transform someone into a cyborg by adding various styles and shapes to a person's face.



Open the photo you want to turn into a robot. For this tutorial, it is best if you use a photo with a face of a person like the one I'm using. If you want to use the image I used for the tutorial, ORIGINAL.JPG !

Create a new layer.

Choose the elliptical marquee tool , then holding down the SHIFT button, click and drag to make a selection around the eye, then fill the layer with a dark color.

Use your own judgement for the size, dont make it too big. mine is 74px by 74px (you can see the size of current selection on the "info" pallette.



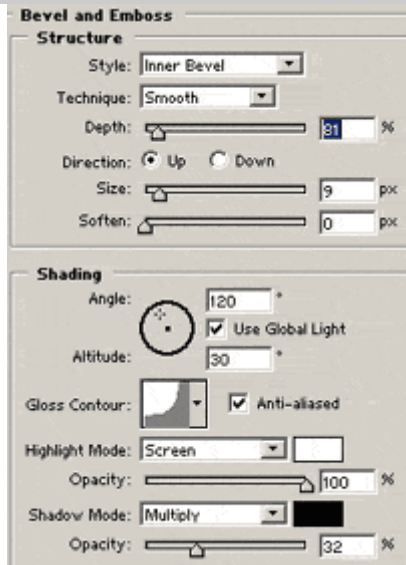
Now go to **Select->Modify->Contract** and enter about **10**.

Then hit **delete**.

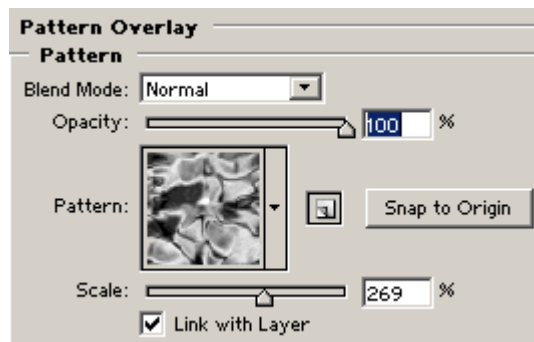
Hit **CTRL+D** to deselect.




Now go to **Layer->Layer Style->Bevel & Emboss** and apply the following settings:



Then **Layer->Layer Style->Pattern Overlay** and the following settings:



Now choose the **elliptical marquee tool**  again, and while holding the SHIFT key, click and drag to make a small selection the same size as the smaller inner circle.



Now create a **new layer**.

Then go to **Edit->Stroke**:

Width: 1px

Color: Black

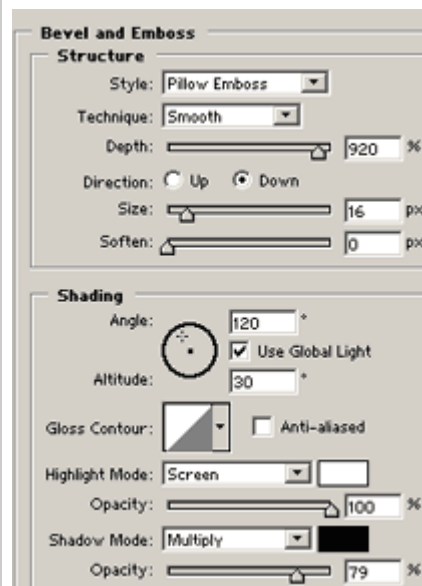
Location: Center

Leave the others as default, then **click ok**.

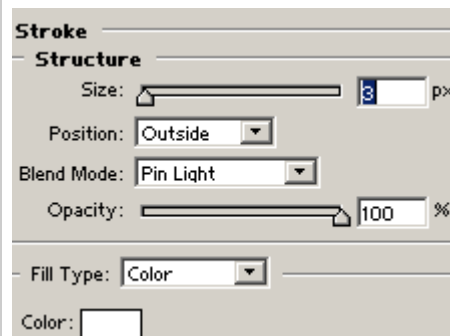
CTRL+D to deselect.



Go to **Layer->Layer Style->Bevel & Emboss**.



Then **Layer->Layer Style->Stroke**



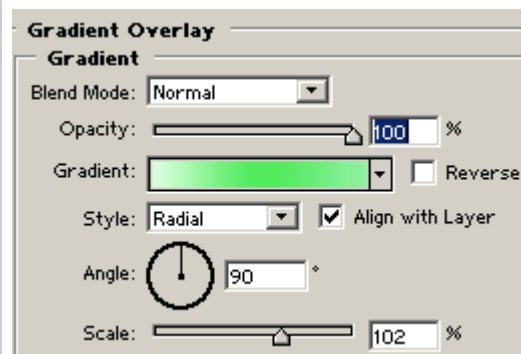


Create a new layer.

Once again, use the elliptical marquee tool + Hold down shift and create another circle even smaller than before, fill with any color. See image on the left.



Now go to **Layer->Layer Style->Gradient Fill**

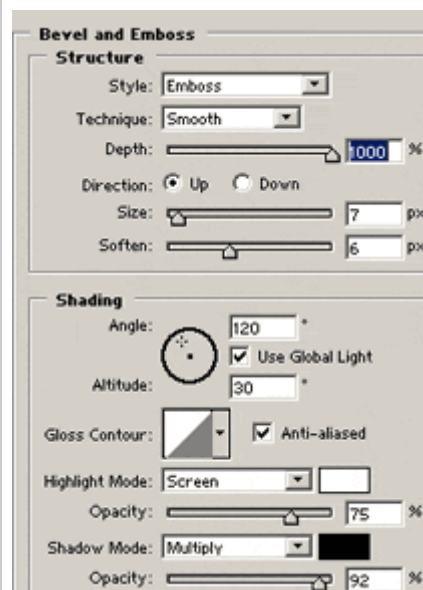


The gradient color is as follow:

D8FFDD -> 54EB5F -> 90F1A0

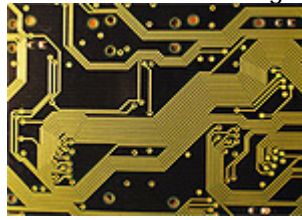


Now go to **Layer->Layer Style-> Bevel Emboss**





Download the following circuit image.



Open the above image, then copy and paste it onto the face, set its blending mode to "PIN LIGHT". and opacity to 50%

Now you can move the circuit layer around until you see a pattern inside the eye that you like.



Now choose the eraser tool, and soft brush size



Now use the eraser tool and carefully just erase circuit leaving only what's inside the eye (green area).

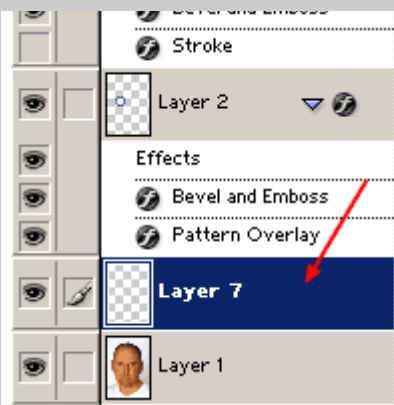
You can leaving a little on the frame (grey area) of the eye if you like, it gives a nice effect.



Now use the lasso tool and draw a selection around the edge of the face and shape like the image to the left.



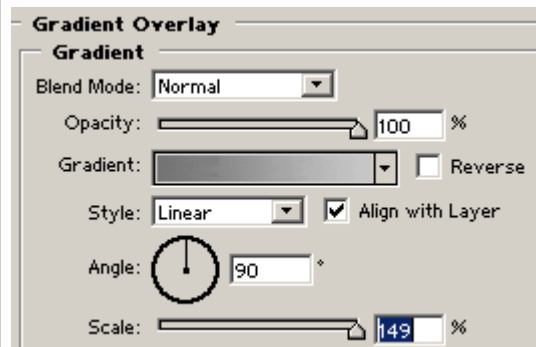
Create a new layer UNDERNEATH the eye's layer (just above the original photo)



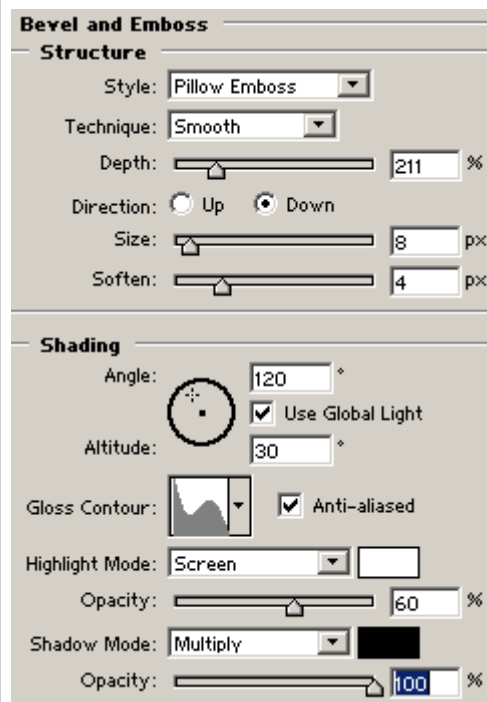
Then fill the selection. **CTRL+D** to deselect

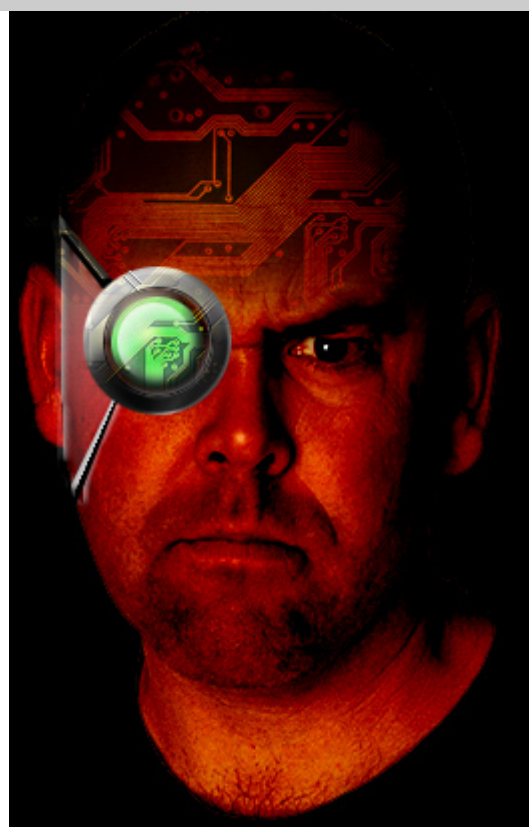


Go to **Layer->Layer Style->Gradient Fill**. Fill with light grey and dark grey to give a metallic effect



Go to **Layer->layer Style->Bevel Emboss**.





Well, that's it for this tutorial, as you can see, all we need to do is add a few metallic objects to the face. This tutorial can go on forever, and im not going to bore you with instructions, you take over from here and use your own creativity to enhance your face. To the left is what I made after playing around.

PDF By: **Bernawolf_hatef**

Sir_hatef@yahoo.com

www.Bernawolf.coM

Copyright © 2005 B.S.G (Bernawolf Software Group)