



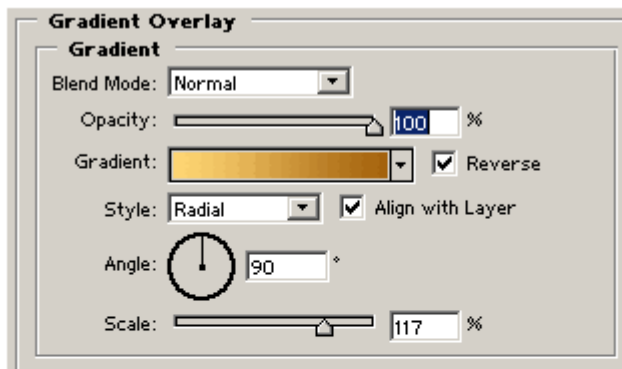
Explosion

Description: In this tutorial, we'll be creating an explosion effect.

Start a new document 800x600. Fill the background with **black**

Now use the ellipse shape tool and create a small round shape about 30x30px.

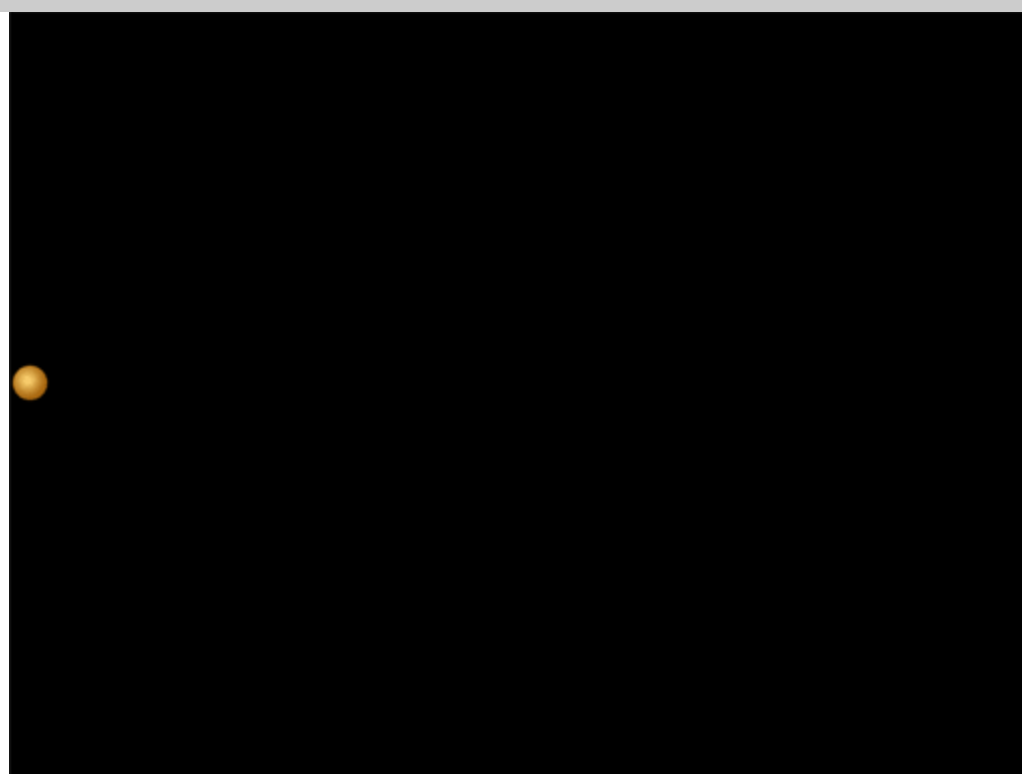
Then apply the following Gradient: **Layer->Layer Style->Gradient overlay**.



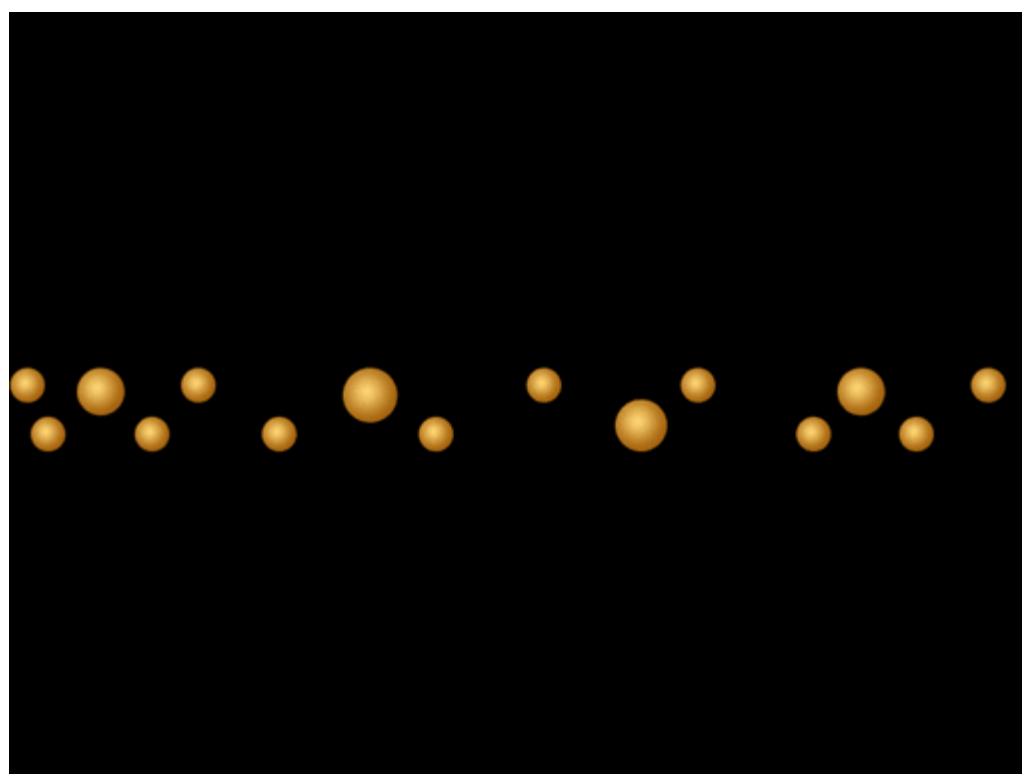
#A4620C

#FFD674

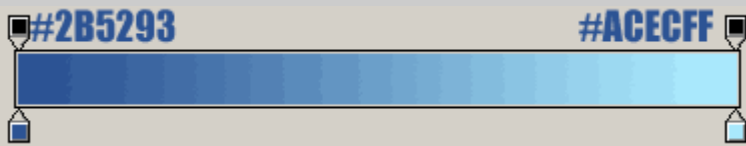
Position this shape about half way down the image.



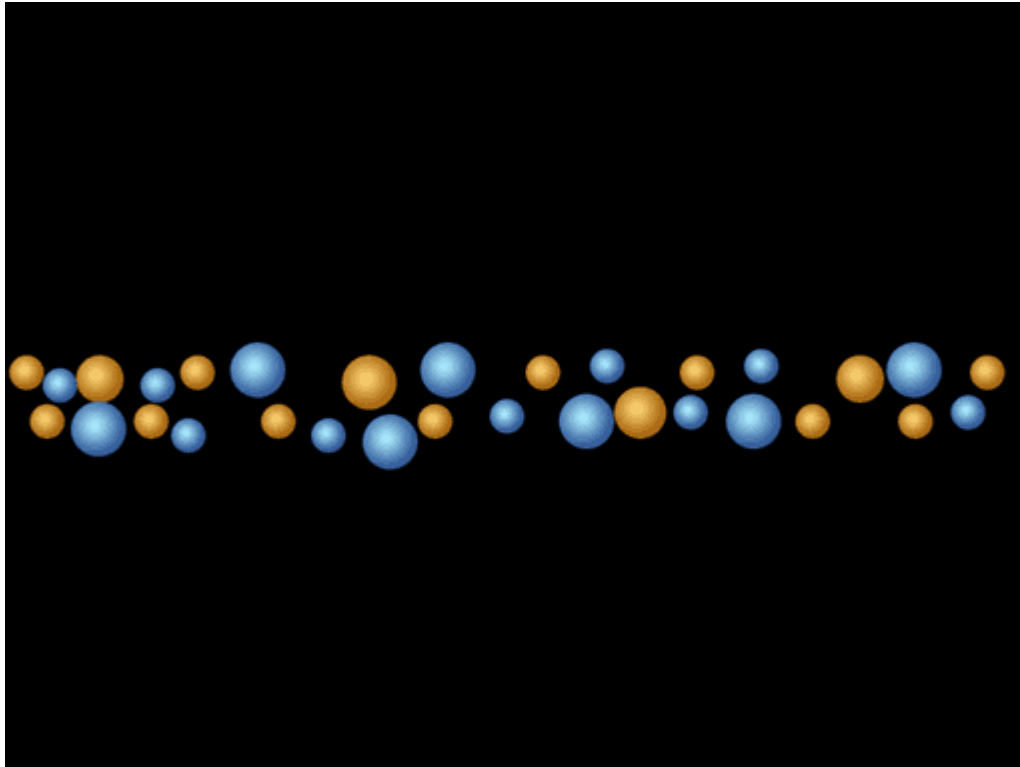
Now Duplicate this shape and position it horizontal to the original, and down by about 50px. will this area with these shapes. Also, resize several of them to be bigger than the other so you have a mixture of larger and smaller shapes.



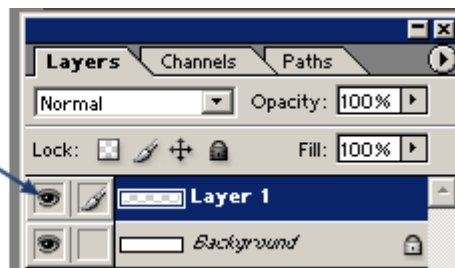
Now use the ellipse shape tool again and create another circle like before, this time though, apply the following gradient colors instead (same settings as previous gradient).



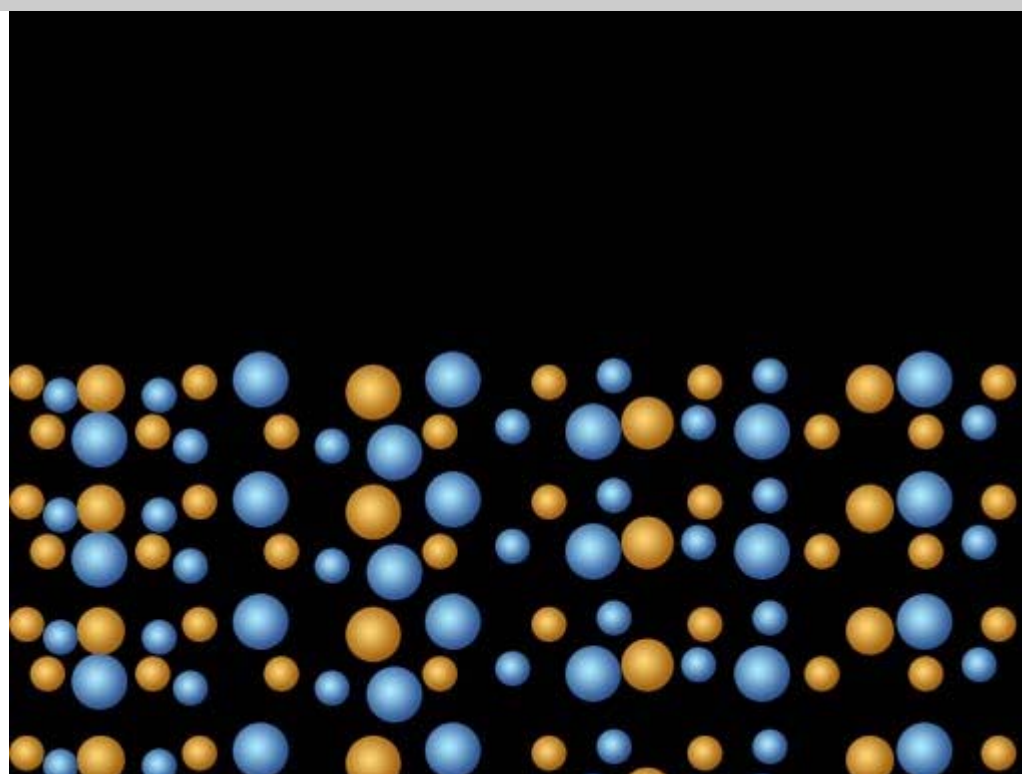
Now repeat the 2nd step above to duplicate these blue shapes and resize to make big and small sizes. fill your image so it look similar to below.



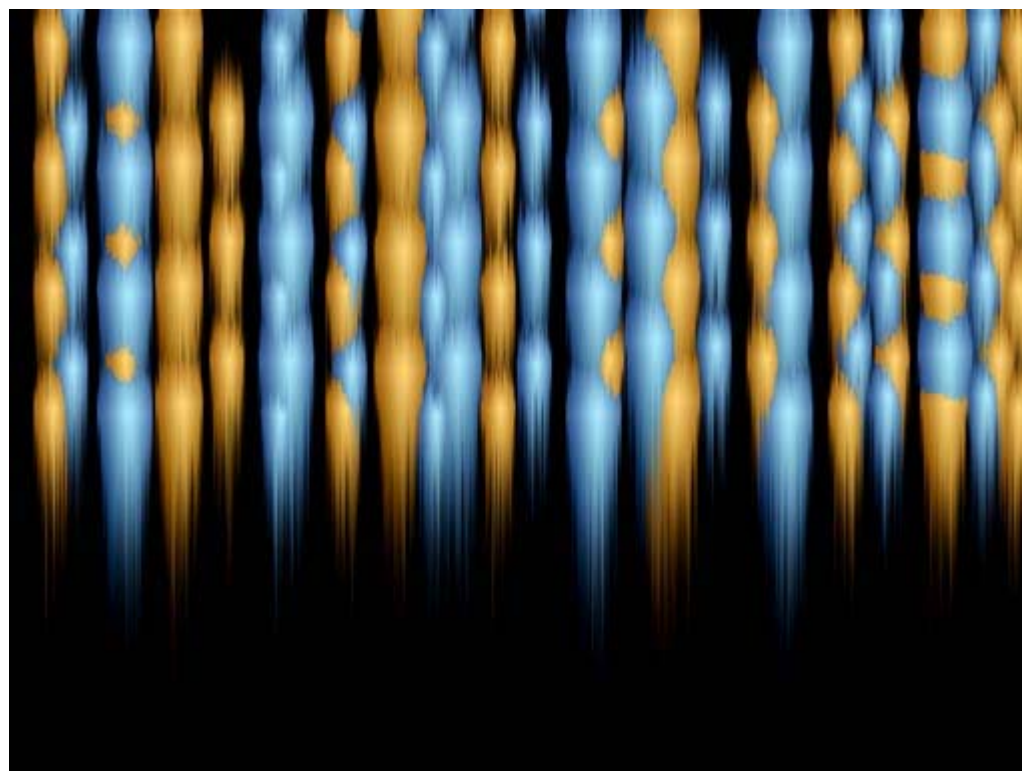
Click this icon
to hide the layer



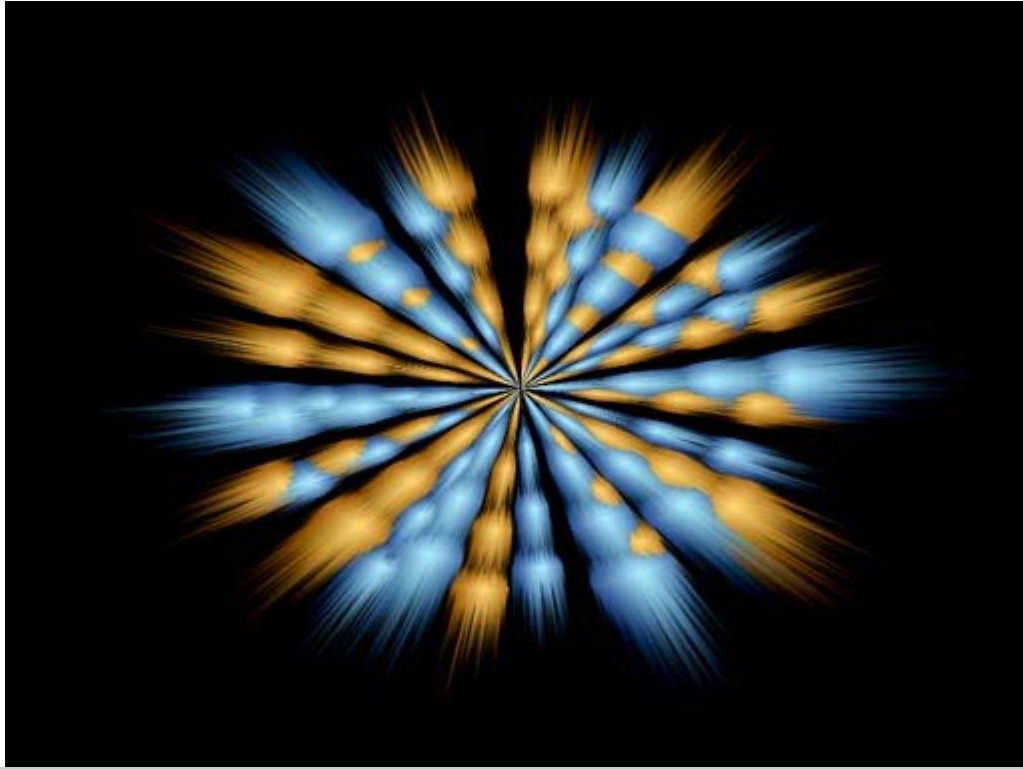
Now, go to Layer->Merge Visible. This will merge all the shapes together giving you 1 layer with all the shapes., now you can make the background visible again. Now duplicate that layer you just merged and fill the entire bottom part of the image with these shapes.



- Now go to **Layer->Flatten Image**
- Then **Image->Rotate Canvas->90CW**
- Then **Filter->Stylize->Wind: Method: Wind Direction: From the Right**
- Then **Filter->Stylize->Wind: Method: Wind Direction: From the Left**
- Press CTRL+F to reapply the filter.
- Then go to **Image->Rotate Canvas->90CW**



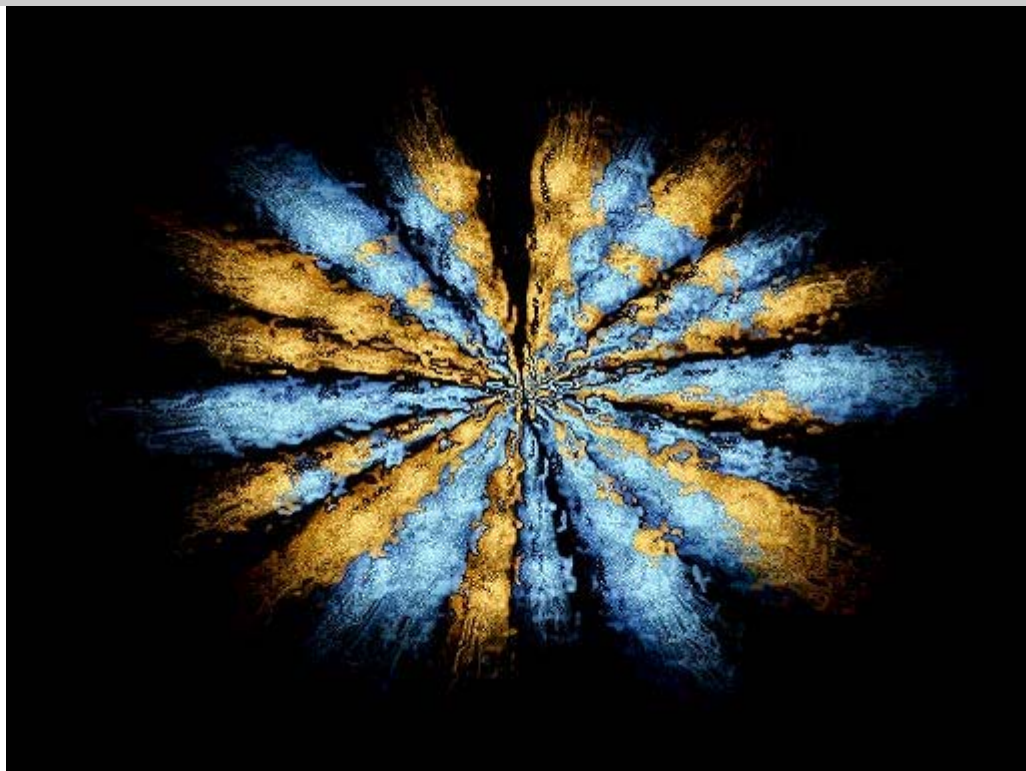
Now go to **Filter->Distort->Polar Coordinate** > Rectangular to Polar.



Now duplicate this layer, then go to **Filter->Distort->Ocean Ripple**:
Ripple Size : 13 - Ripple Magnitude: 9

Now set the layer blending mode to "Screen". and opacity to 80%.

Then duplicate this layer (the layer you just duplicated). and set the blending mode to "Dissolve", and opacity to 70%



Here is mine after adding some text



And After applying Image-> Adjustment ->Color Balance. to the explosion layer.



PDF By: **Bernawolf_hatef**

Sir_hatef@yahoo.com

www.Bernawolf.coM

Copyright © 2005 B.S.G (Bernawolf Software Group)