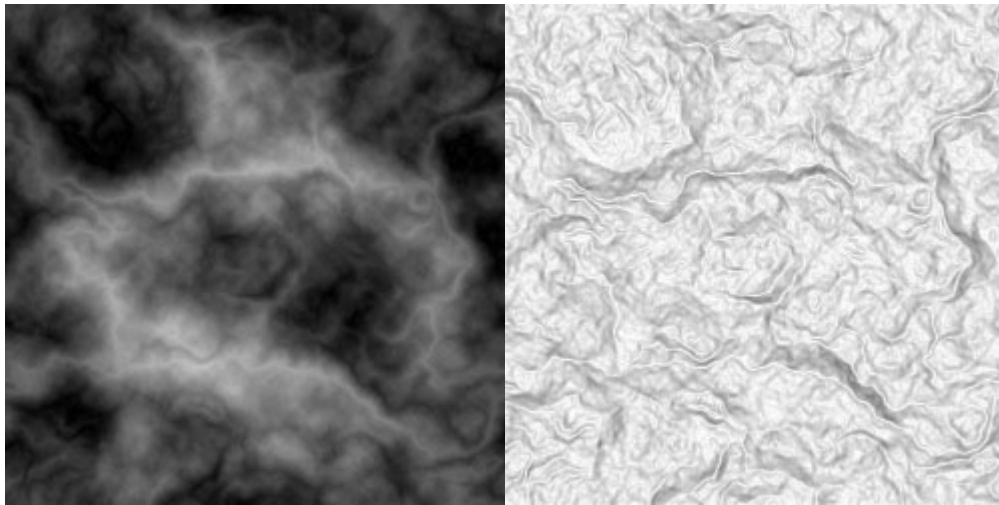




arctic wind

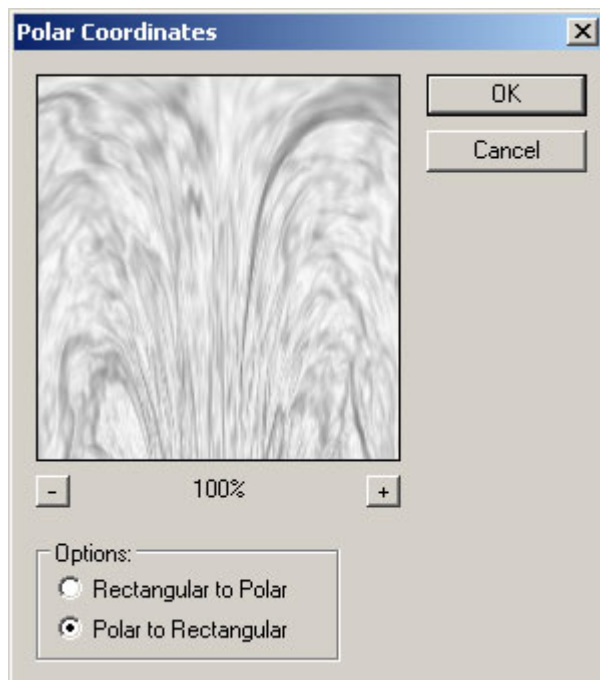
step1:

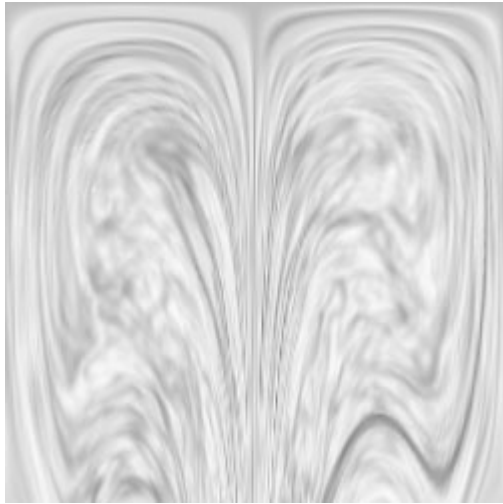
start out by creating a new document 250x250 (bigger if you want later on). then goto filter > render > different clouds. repeat that filter 15 times (just press ctrl+f 15 times). then go to filter > stylize > find edges.



step2:

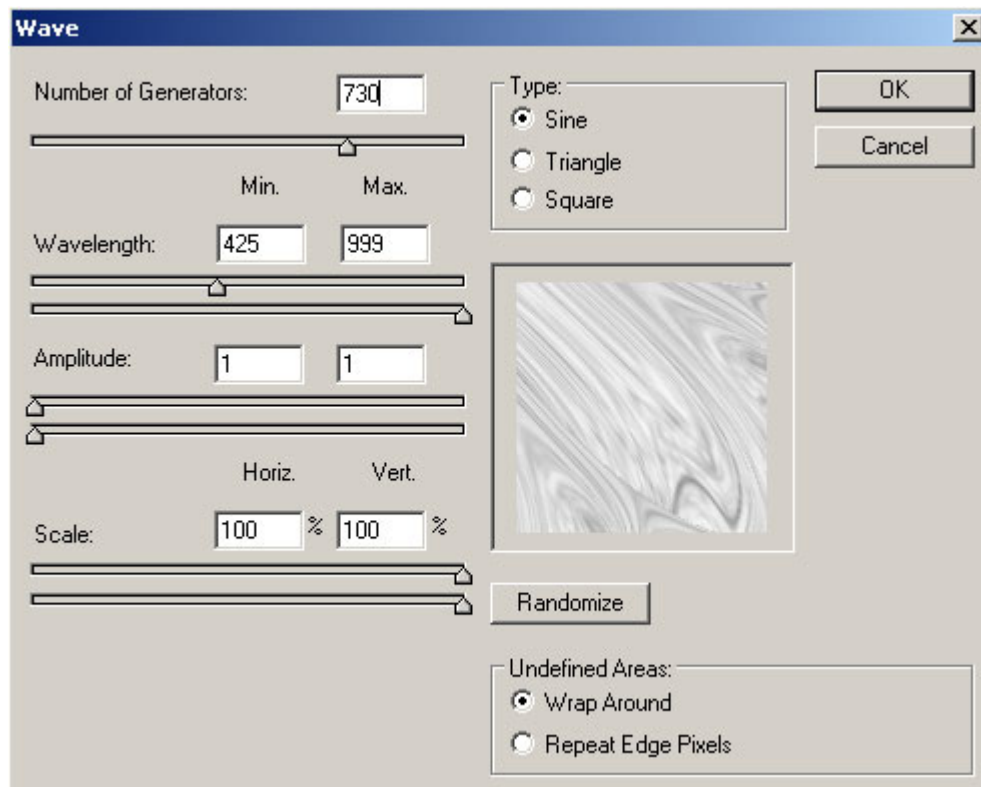
after you get your image looking a little something like the image above (right) goto filter > distort > polar coordinates. use the settings below and repeat this step 3 times (ctrl+f).





step 3:

now that you got you image looking a little something like the image above (right) goto filter > distort > wave and use the settings below:



step 4:

duplicate the layer that you have been working with and set the blend mode to overlay (on new layer). with your new layer selected to to edit > transform > rotate 90 CCW. duplicate your new layer and then go to edit > transform > rotate 90 CCW. now with you new layer selected (the upper most layer, or the one on top) goto image > adjustments > invert (ctrl+I). now you should have 3 layers. select the middle one and hit ctrl+u (to colorize) and use these settings:

hue: 198
saturation: 20
lightness: 0

be sure to have colorize box checked. you should get something like the image below:



PDF By: **Bernawolf_hatef**

Sir_hatef@yahoo.com

[Www.Bernawolf.coM](http://www.Bernawolf.coM)

<http://photoshop.Bernawolf.com>

Copyright © 2005 B.S.G (Bernawolf Software Group)